

SERVICE MANUAL

Conditions of Use:

- (1) Please use this information only for the purpose of performing repair, maintenance and/or configuration services of the Sony products (hereinafter the "Repair services") under the service agreement entered into with the Sony group company (hereinafter the "Service agreement"). Using this information for any purpose other than the purpose described foregoing is forbidden.
- (2) Only the Authorized Servicer's officers, employees or subcontractors (including their officers and employees) whose duties justify a need-to-know and who have agreed to hold confidential this information (collectively hereinafter the "Permitted users") are permitted to access and use this information. To disclose or disseminate to any person other than the Permitted users is forbidden.
- (3) Destroy or erase any and all portion of this information promptly in an irrecoverable and secure fashion after achieving the purpose described in Section (1) above.
- (4) Do not copy, replicate, reproduce, alter, translate, transmit, sell, lease, or distribute this information in whole or in part without the prior written permission of the author. (Notwithstanding foregoing, it is permitted to copy and distribute this information to the Permitted users.)
- (5) Please notify immediately any leakage, loss, theft, misappropriation, or other misuse of this information by e-mail to the following address:
somk-gcs-tissnexim-adm@jp.sony.com
- (6) In addition to the above, the terms and conditions of the Service agreement shall be applied to using this information.

Revision of Information:

This information may be changed or updated at any time without any prior notice. Please confirm that this information is up-to-date before using it.

Note:

Be sure to keep your PC used for service and checking of this unit always updated with the latest version of your anti-virus software.
In case a virus affected unit was found during service, contact your Service Headquarters.

CAUTION

Danger of explosion if battery is incorrectly replaced.
Replace only with the same or equivalent type.

注意

如果電池更換不當會有爆炸危險
只能用同樣類型或等效類型的電池來更換

警告

本電池如果更換不正確會有爆炸的危險
請依製造商說明書處理用過之電池

Sony CONFIDENTIAL
For Authorized Servicer

9-930-879-01

2025E33-1

© 2025.05

Sony Corporation

SONY®

SECTION 4 EXPLODED VIEWS

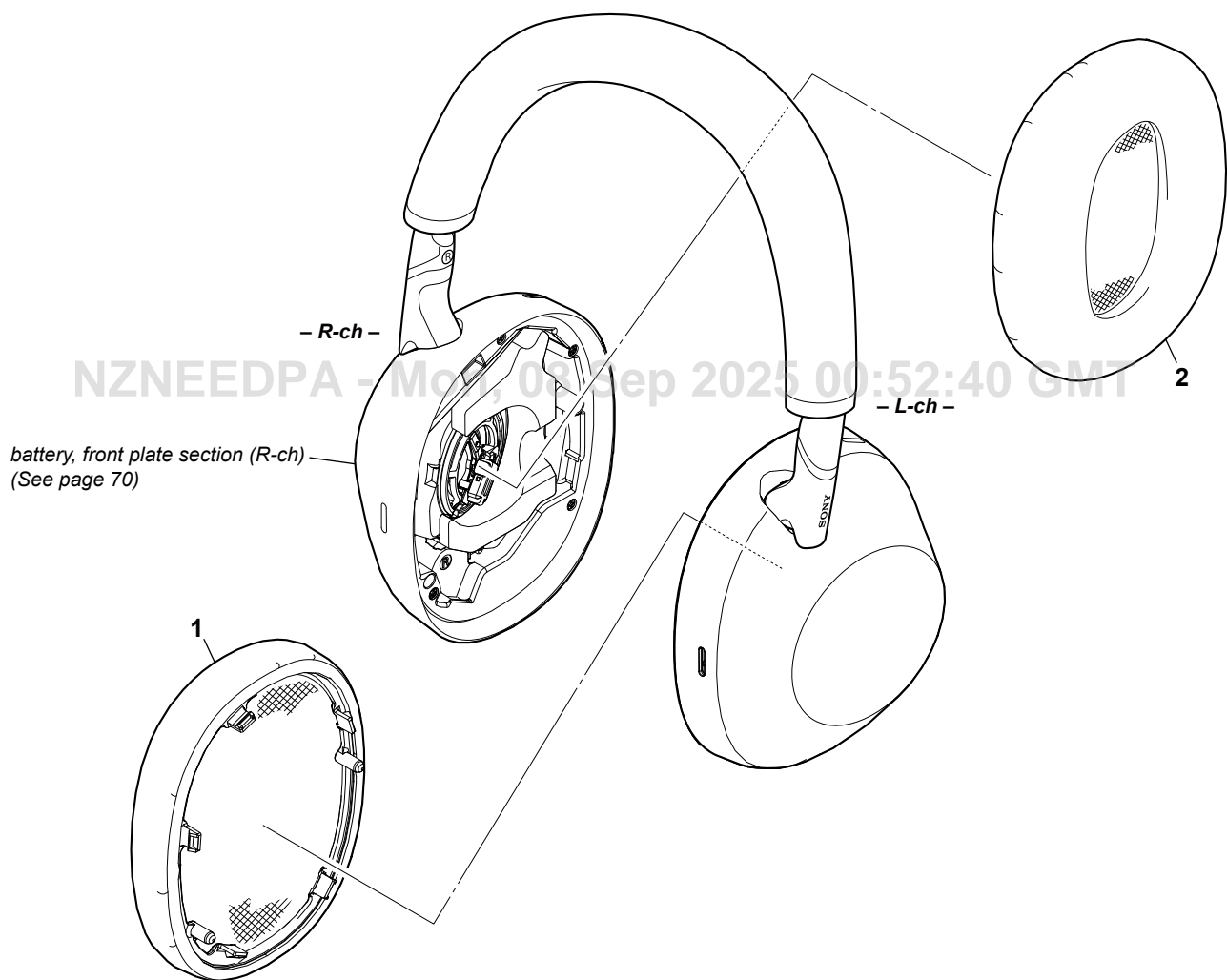
Note:

- -XX and -X mean standardized parts, so they may have some difference from the original one.
- Items marked "*" are not stocked since they are seldom required for routine service. Some delay should be anticipated when ordering these items.
- The mechanical parts with no reference number in the exploded views are not supplied.
- Color Indication of Appearance Parts Example:
KNOB, BALANCE (WHITE) . . . (RED)

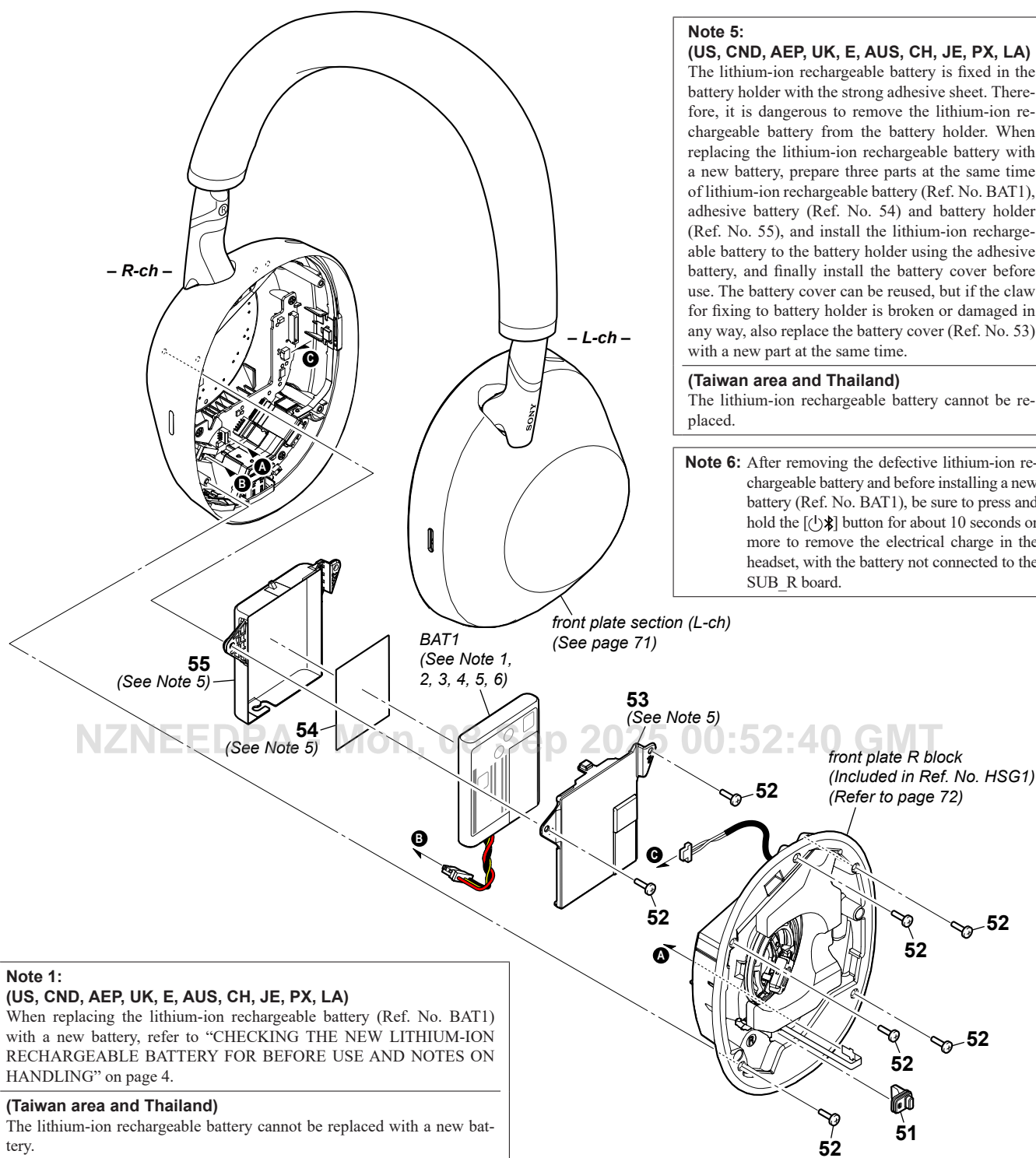
↑
Parts Color

↑
Cabinet's Color
- Refer to "COLOR VARIATIONS" on page 5 about color variation of the unit.

4-1. EAR PAD SECTION



4-2. BATTERY, FRONT PLATE SECTION (R-ch)

**Note 5:****(US, CND, AEP, UK, E, AUS, CH, JE, PX, LA)**

The lithium-ion rechargeable battery is fixed in the battery holder with the strong adhesive sheet. Therefore, it is dangerous to remove the lithium-ion rechargeable battery from the battery holder. When replacing the lithium-ion rechargeable battery with a new battery, prepare three parts at the same time of lithium-ion rechargeable battery (Ref. No. BAT1), adhesive battery (Ref. No. 54) and battery holder (Ref. No. 55), and install the lithium-ion rechargeable battery to the battery holder using the adhesive battery, and finally install the battery cover before use. The battery cover can be reused, but if the claw for fixing to battery holder is broken or damaged in any way, also replace the battery cover (Ref. No. 53) with a new part at the same time.

(Taiwan area and Thailand)

The lithium-ion rechargeable battery cannot be replaced.

Note 6:

After removing the defective lithium-ion rechargeable battery and before installing a new battery (Ref. No. BAT1), be sure to press and hold the [⏻] button for about 10 seconds or more to remove the electrical charge in the headset, with the battery not connected to the SUB_R board.

Note 1:**(US, CND, AEP, UK, E, AUS, CH, JE, PX, LA)**

When replacing the lithium-ion rechargeable battery (Ref. No. BAT1) with a new battery, refer to "CHECKING THE NEW LITHIUM-ION RECHARGEABLE BATTERY FOR BEFORE USE AND NOTES ON HANDLING" on page 4.

(Taiwan area and Thailand)

The lithium-ion rechargeable battery cannot be replaced with a new battery.

Note 2: When disposing of a faulty lithium-ion rechargeable battery (Ref. No. BAT1), please dispose of them correctly according to the regulations set by each country or region.

Note 3:**(US, CND, AEP, UK, E, AUS, CH, JE, PX, LA)**

When removing the lithium-ion rechargeable battery (Ref. No. BAT1) from the adhesive sheet, it cannot reuse the battery. In that case, be sure to replace it with a new battery.

(Taiwan area and Thailand)

The lithium-ion rechargeable battery cannot be replaced with a new battery.

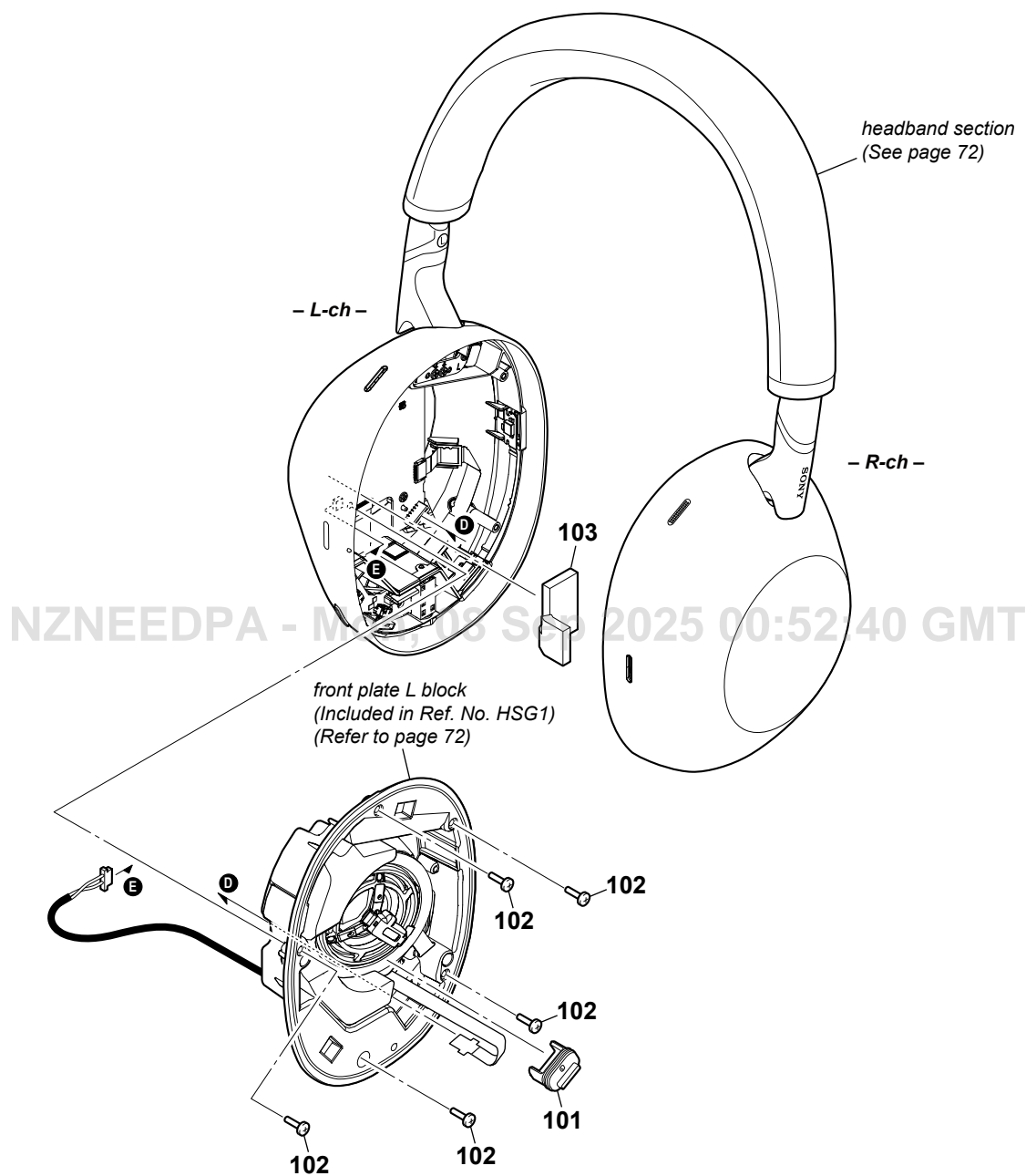
Note 4:**(US, CND, AEP, UK, E, AUS, CH, JE, PX, LA)**

This headset uses two types of the lithium-ion rechargeable battery (Ref. No. BAT1). When replacing the lithium-ion rechargeable battery with a new battery, be sure to refer to "TYPES OF THE LITHIUM-ION RECHARGEABLE BATTERY" on page 5 to identify the type of battery being replaced, and then select the appropriate battery to replace it.

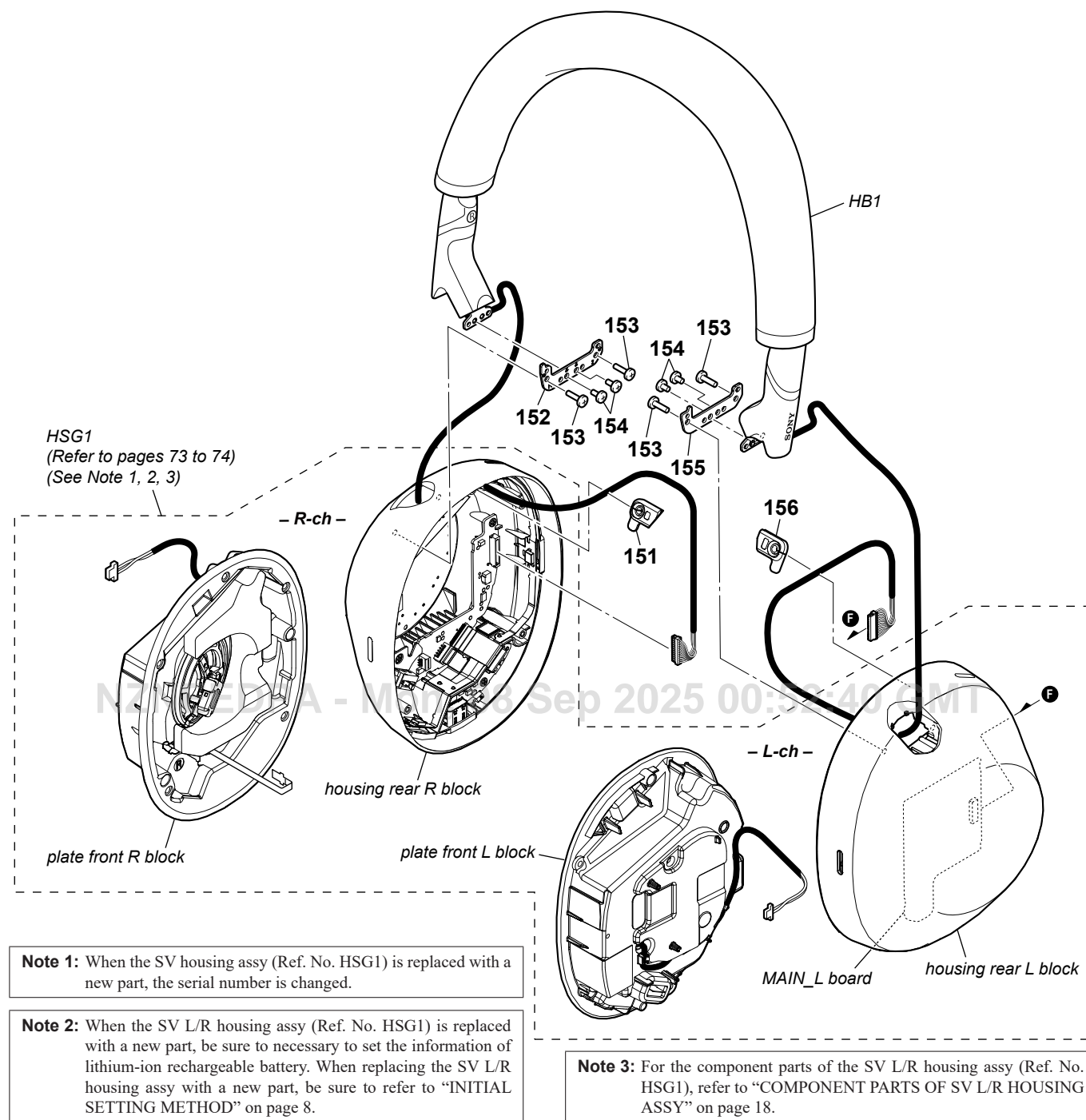
(Taiwan area and Thailand)

The lithium-ion rechargeable battery cannot be replaced.

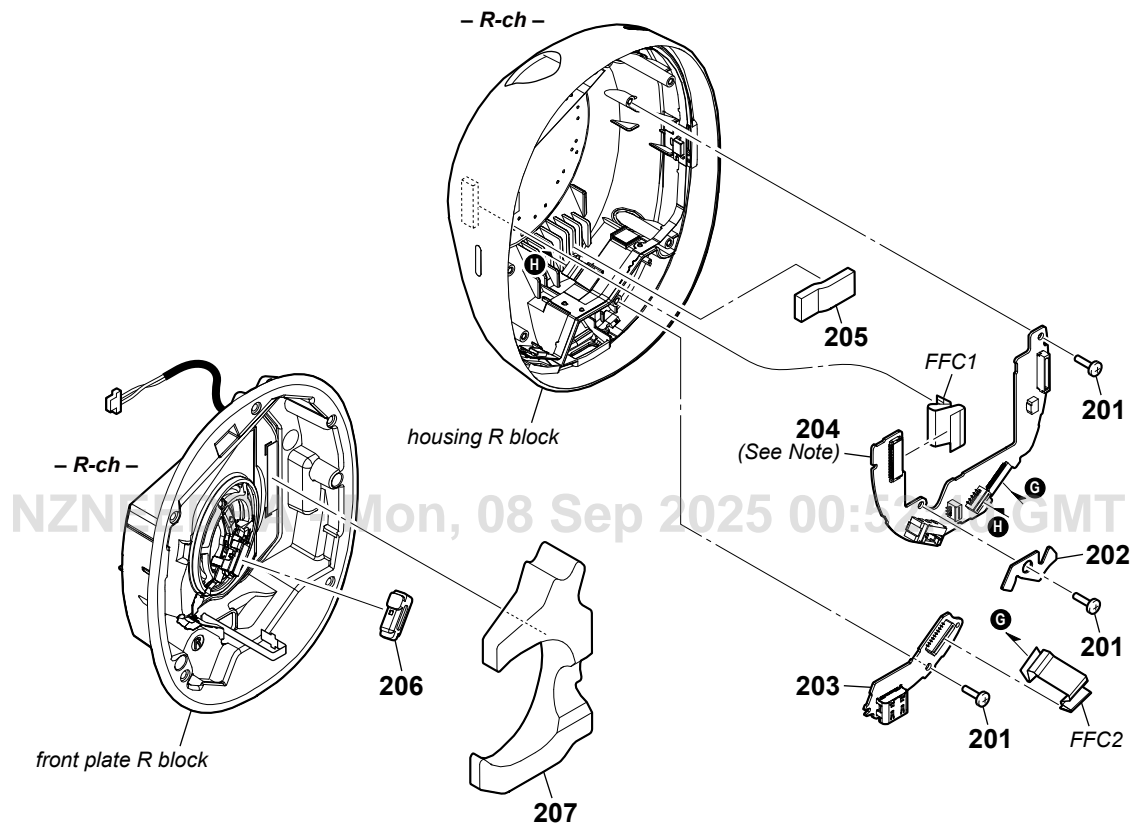
4-3. FRONT PLATE SECTION (L-ch)



4-4. HEADBAND SECTION

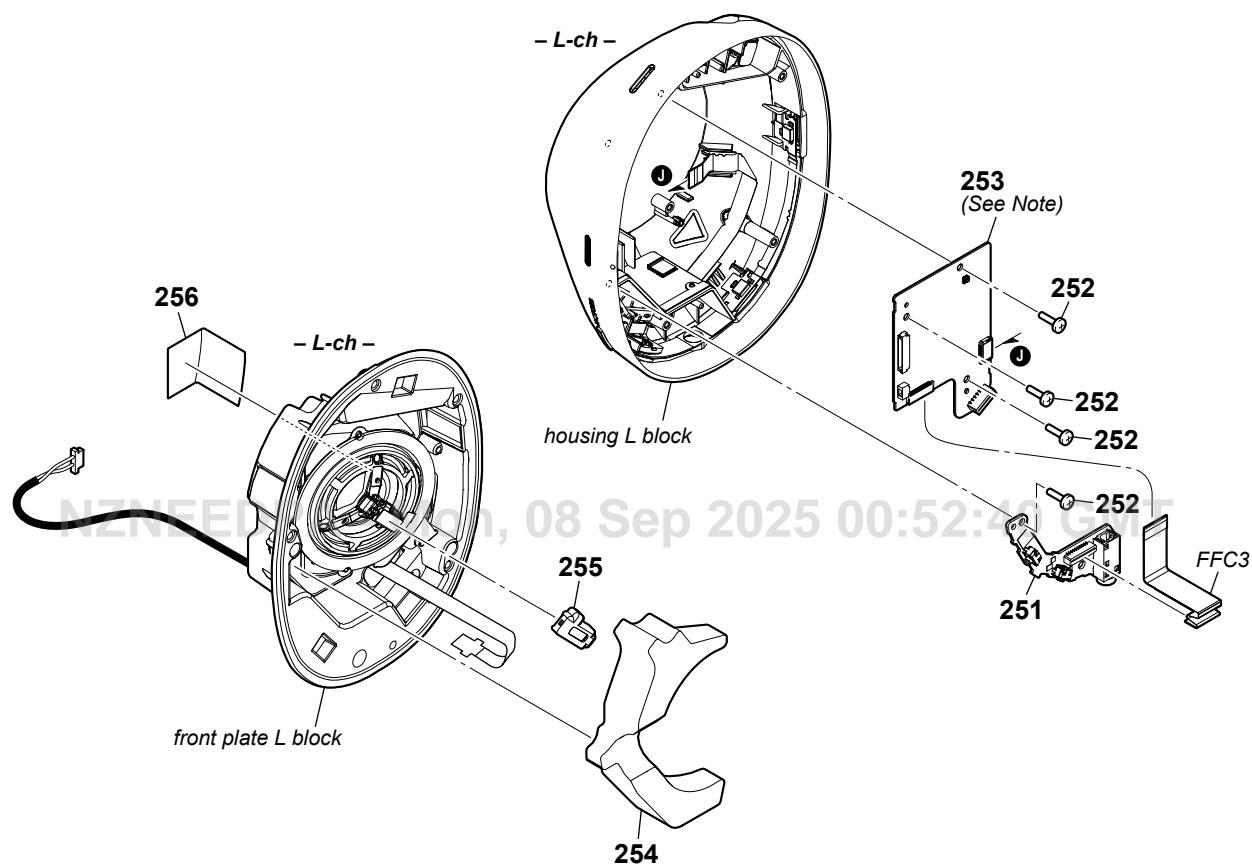


4-5. HOUSING SECTION (R-ch)



Note: When the complete SUB_R board (Ref. No. 204) is replaced with a new board, be sure to necessary to set the information of lithium-ion rechargeable battery. When replacing the complete SUB_R board with a new board, be sure to refer to “INITIAL SETTING METHOD-OD” on page 8.

4-6. HOUSING SECTION (L-ch)



SECTION 5 ACCESSORIES

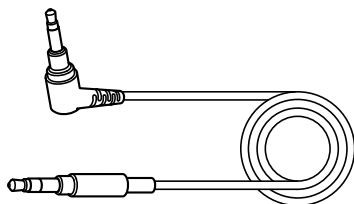
501

USB Type-C® cable (USB-A to USB-C®) (1)



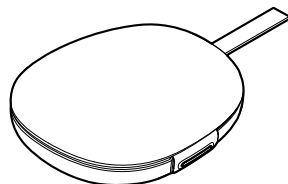
502

Headphone cable (1)



503

Carrying case (1)



- Refer to "COLOR VARIATIONS" on page 5 about color variation of the unit.